

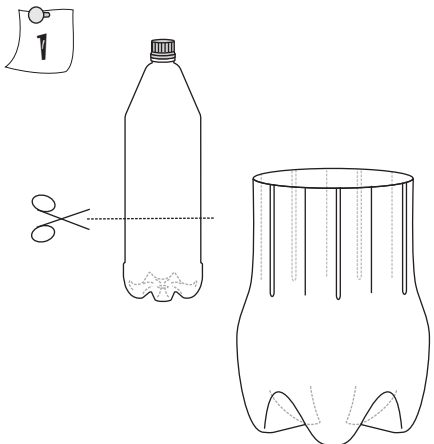
# BOTTLE BOX

**YOU NEED**

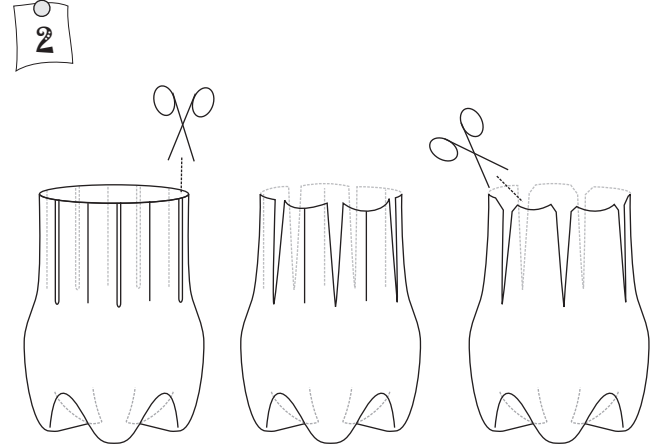
Plastic Bottle

Cutter

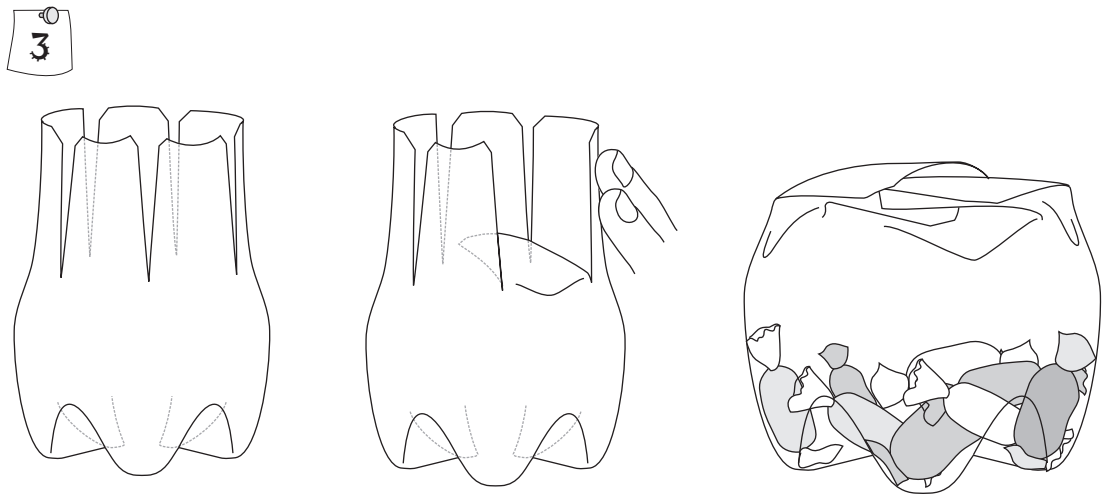
Scissors



Cut a 2-liter empty plastic coke bottle 15-cm from the base.



Make 5 vertical cuts 5-cm long to make 5 petals. Cut the corners round with a scissors.



The 5 petals will make a good lid. Close the petals one-by-one. They shut with a snap. Place some sweets in this wonderful "Bottle Box" and gift it to a friend.