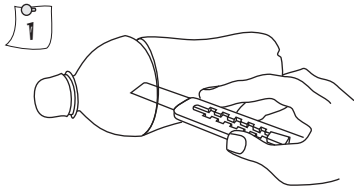
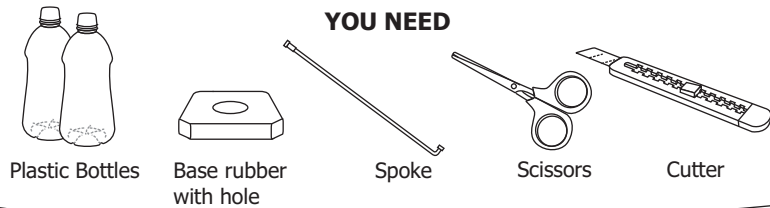
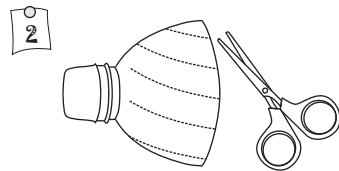


BOTTLE PROPELLER

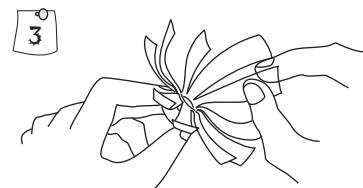
YOU NEED



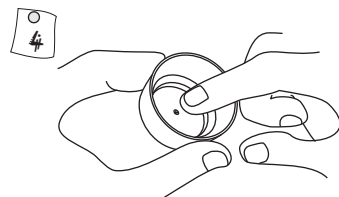
1 Cut a plastic bottle top to make the fan.



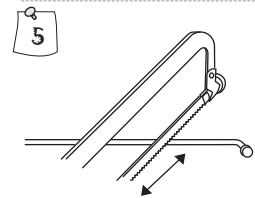
2 Cut 12 petals at a slant.



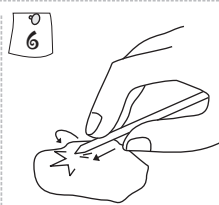
3 Twist, give curvature to each petal to make fan blades.



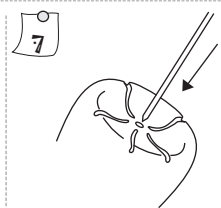
4 Make a dent in the middle of the lid.



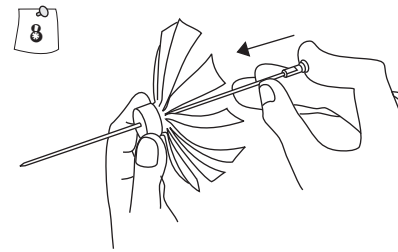
5 Cut cycle spoke slightly longer than the bottle height.



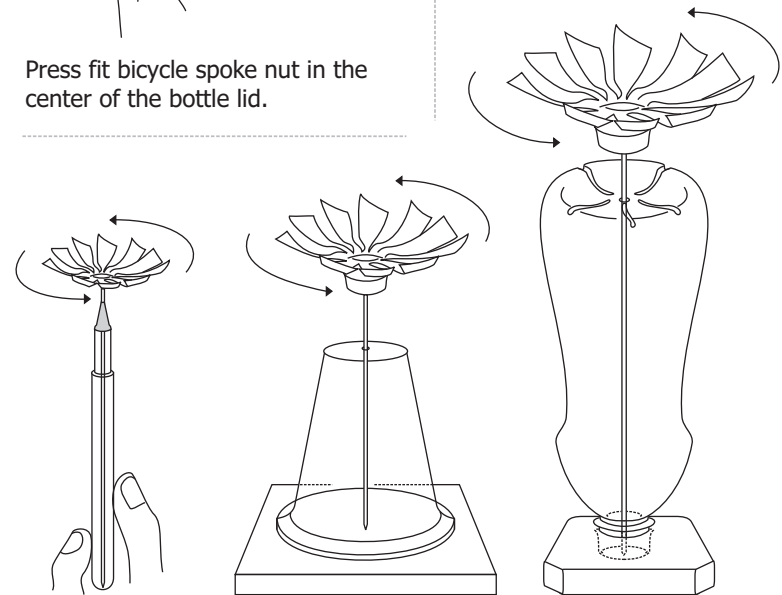
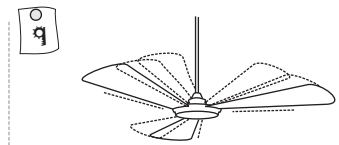
6 File / rub spoke on stone to make one end pointed.



7 Make a smooth hole in the base of the bottle.



8 Press fit bicycle spoke nut in the center of the bottle lid.



DIFFERENT VARIATIONS

Place these assemblies under a ceiling fan. In each case the propeller will spin very fast.